

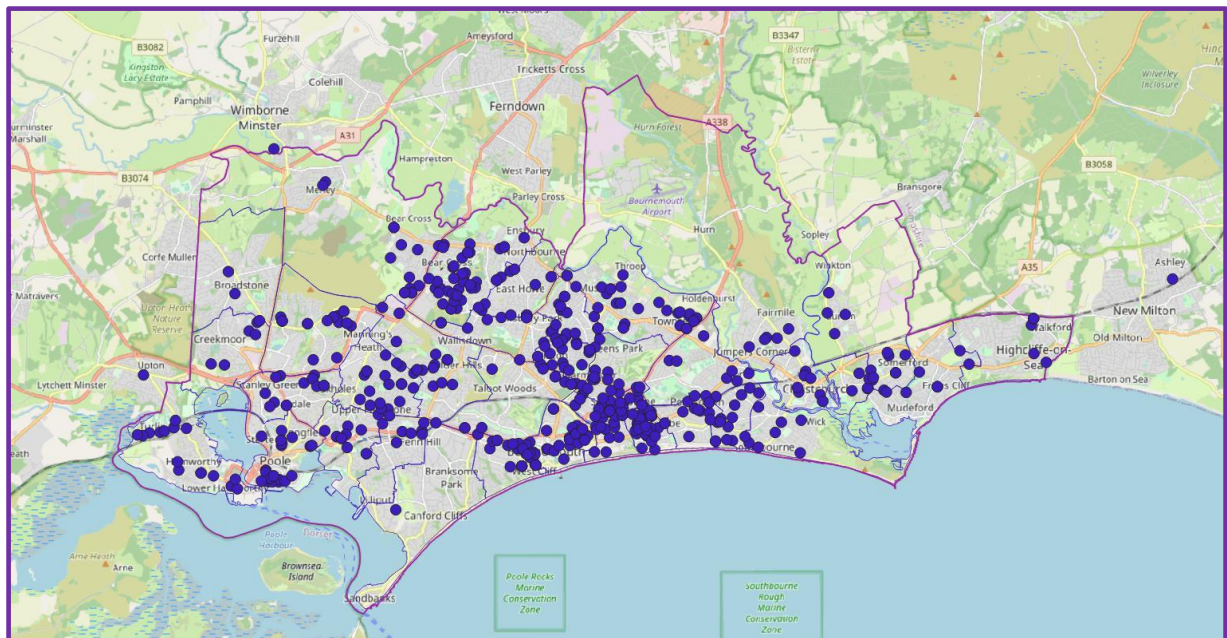
Appendix C- CSP dataset and KPI update 2022/3

1. Observations:

1.1. As we have remarked in at least the two most recent Strategic Assessments:

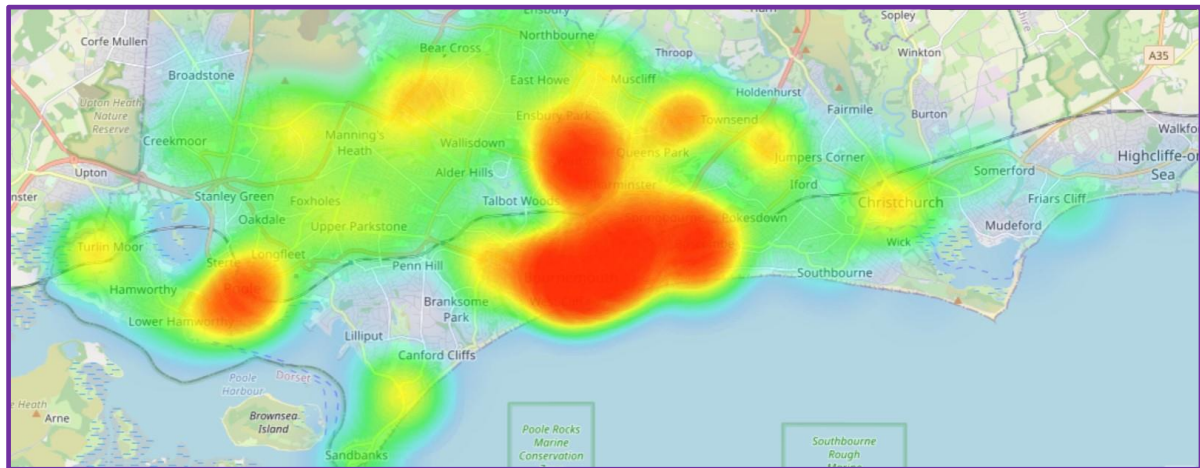
“ . . . possibly the single most important objective conclusion within this Strategic Assessment is that different members of our community do not share an “equality of risk” to the threats underlying the recommended priorities. We fail to recognise this if we pool those at highest risk with a general population comprising a significant majority of individuals who are lower risk by virtue of age, gender, race, income, vulnerability, etc, and when and where they work, reside, study, or travel.”

1.2. At the most basic level of geographic distribution, if we look at victims of Domestic Abuse assessed to be at High Risk, and thus referred to MARAC (ten months data) we can see an intensity of activity in clusters where we have higher levels of deprivation:

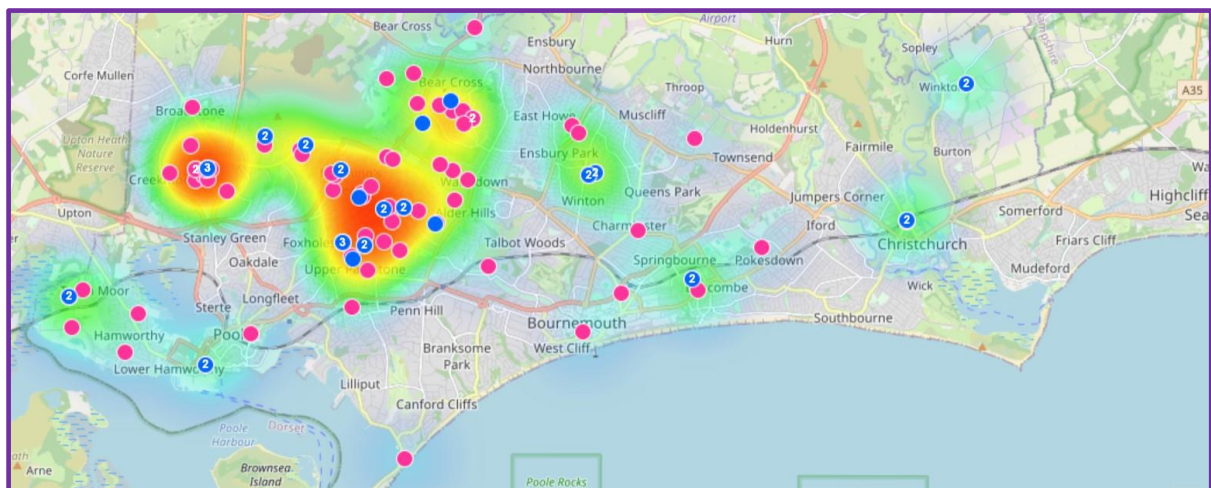


OFFICIAL

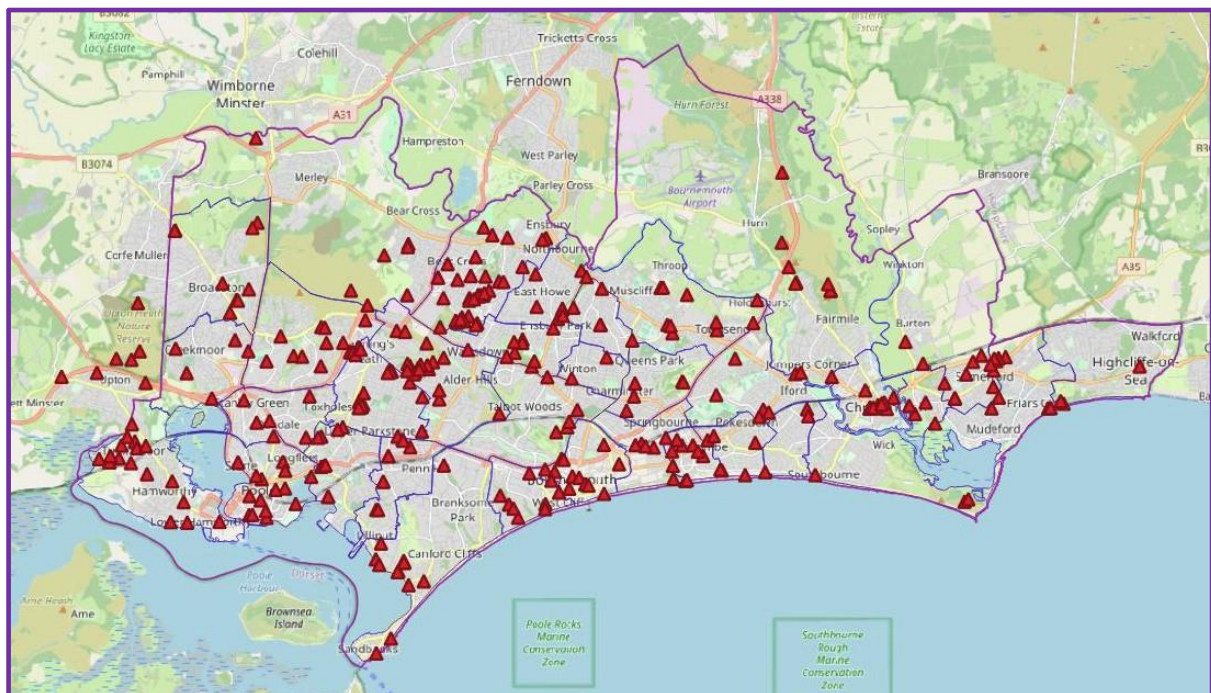
... or the distribution of Police recorded ASB in twelve months to April 2023:



... ASB and crimes involving catapults in the last twelve months:



... or deliberate fires attended by DWF&RS in the same period:



OFFICIAL

- 1.3. This geographic concentration of victims (and general vulnerabilities by almost every measure we look at, including indices of deprivation) is the driver for the individual locality-based 'Task & Finish' problem-solving groups operating in the CSP.
- 1.4. However, other "inequalities of risk" – gender for example – are very, very significant. Again, some of these are being addressed by specific problem-solving groups. Work to fulfil our obligations under the new Serious Violence Duty will quantify a range of factors that increase the likelihood of an individual becoming either a victim or a perpetrator of serious violence, including sexual violence. Again, this work is dependent on the collection of and sharing of reliable and comprehensive data that is as complete as possible.

OFFICIAL

APPENDIX A – AGREED CSP STANDARD DATA SET THAT APPLIED THROUGHOUT 2022/23:

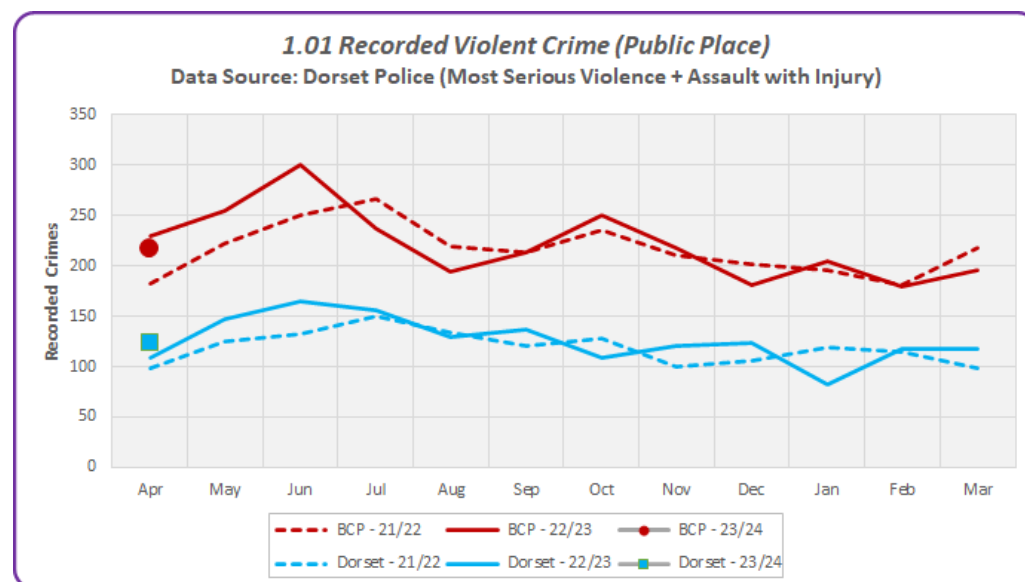
Priority 1 Tackle violent crime in all its forms			2022 / 2023 Year			
INDICATOR		2021/2022 Baseline	1st Qtr	2 nd Qtr	3 rd Qtr	4 th Qtr
1.01	Reduction in recorded violent crimes (*Public Place*)	2594 (Q1 = 654, Q2 = 699, Q3 = 648, Q4 = 593)	783	644	648	580 (TOTAL 2655)
1.04	DA – Violent Crimes (DV Violent Crime includes Assault, Sexual Assault, and Harassment offences, within the context of Domestic Abuse.)	4708 (Q1 = 1353, Q2 = 1241, Q3 = 1106, Q4 = 1008)	1123	1052	1032	1141 (TOTAL 4348)
1.05	DA - Incidents (Incident classed as Domestic Abuse, recorded by Police, but which does not constitute a criminal offence.)	6554 (Q1 = 1786, Q2 = 1759, Q3 = 1619 Q4 = 1390)	1436	1451	1327	1505 (TOTAL 5719)
1.08	Sexual Violence - Serious Sexual Offences - TOTAL	1185 (Q1 = 304, Q2 = 299, Q3 = 326, Q4 = 256)	332	278	263	252 (TOTAL 1125)
1.09	Sexual Violence - Serious Sexual Offences (not DA) (Victim 18 or Over)	534 (Q1 = 118, Q2 = 151, Q3 = 157, Q4 = 108)	164	139	125	100 (TOTAL 528)
1.10	Sexual Violence - Serious Sexual Offences (DA) (Victim 18 or Over) ¹	249 (Q1 = 75, Q2 = 66, Q3 = 58, Q4 = 50)	55	44	44	56 (TOTAL 199)

¹ These “DA flagged” offences represent approximately 27% of total Serious Sexual Offences with victim aged 18 or over. Interestingly, Crime Survey for England and Wales / ONS data (*Sexual offences prevalence and victim characteristics, England and Wales: year ending March 2022*) for victims aged 16 and over estimates the percentage of offences with the offender being “Partner or ex Partner” at 57%, with a further 11% “Family member”. ** Very indicative of especially low rate of reporting of sexual violence within the context of Domestic Abuse **.

OFFICIAL

1.11	Sexual Violence - Serious Sexual Offences (Victim aged 17 and under)	370 (Q1 = 105, Q2 = 70, Q3 = 101, Q4 = 94)	104	82	89	92 (TOTAL 367)
1.13	DA – Positive Outcomes: charge, Domestic Violence Protection Order (DVPO), Domestic Violence Protection Notice (DVPN). <i>☞ Numbers do not yet include DVPO / DVPN.</i>	477 (10.13%)	429 (9.87%)			
1.14	DA – MARAC cases (High Risk) <i>☞ 12 month rolling basis as per SafeLives guidelines, i.e. not quarterly figures, but quarterly update of annual figures.</i>	743	732	711	707	725
1.15	DA – Outreach referral (Medium Risk). <i>☞ A small proportion of referrals actually become service users – for example 89 of the 395 in Q4 21/22, and 111 of the 420 Q3 22/23.</i>	1768	464	452	420	

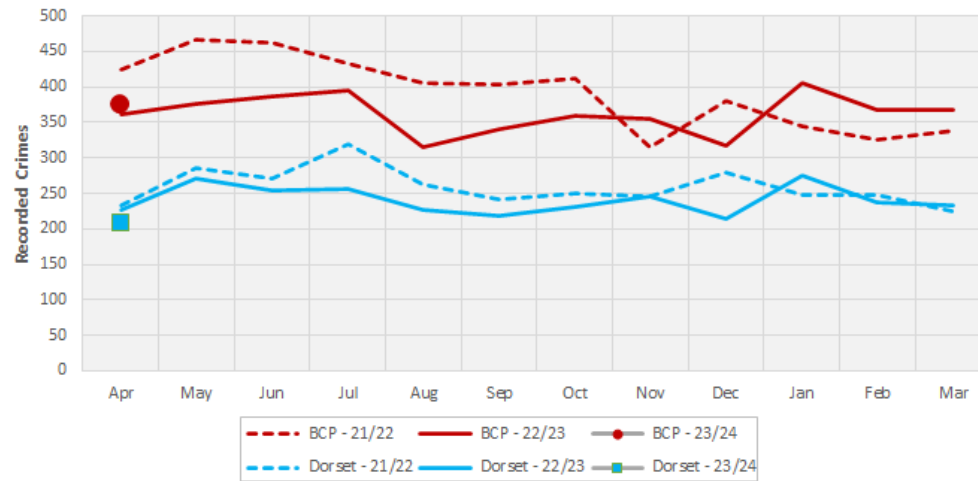
BY MONTH, AND COMPARISONS WITH DORSET COUNTY:



OFFICIAL

1.04 DA Violent Crime

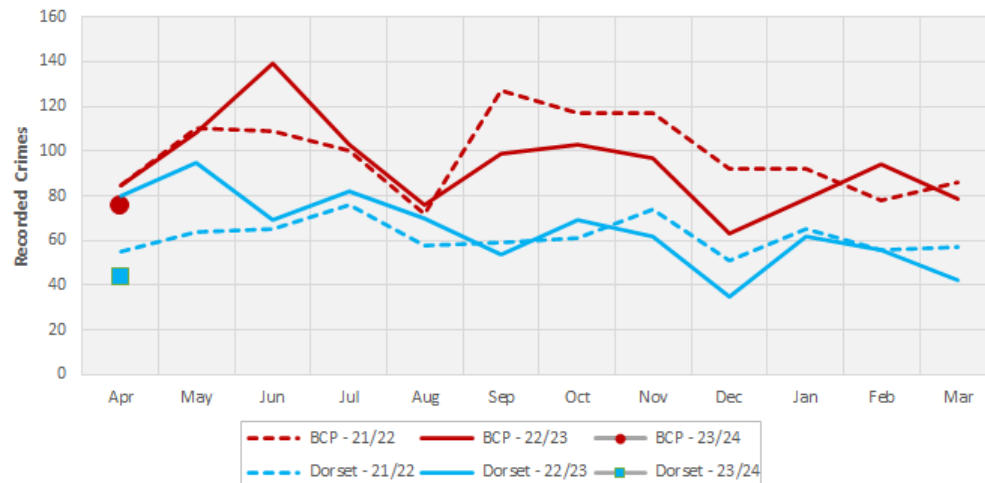
Data Source: Dorset Police



DA VIOLENT CRIMES	TOTAL	Per 000 Pop
(BCP) 2021/22	4,708	14
(BCP) 2022/23	4,348	13
(County) 2021/22	3,109	10
(County) 2022/23	2,892	9

1.08 Sexual Violence - Serious Sexual Offences (Total)

Data Source: Dorset Police



OFFICIAL

Priority 3 Work with communities to deal with antisocial behaviour (ASB) and crime hotspots, including ASB linked to substance misuse

			2022 / 2023 Year			
INDICATOR		2021/2022 Baseline	1st Qtr	2 nd Qtr	3 rd Qtr	4 th Qtr
3.01	The total number of ASB reports to the police	12,440 <i>(Note: includes significant Covid-related recorded ASB Incidents April to June 2021).</i>	3,398	3,310	2,141	2,103 (Total 10,952)
3.02	The total number of new ASB cases opened with the council team	New PI from 2022/23 Q2	-	88	49	36 (Total 173)
3.03	Increase in the reporting of personal ASB to the police	1,672	417	394	248	221 (Total 1,280)
3.04	The number of new personal ASB cases opened with the council team	New PI from 2022/23 Q2	-	22	14	4 (Total 40)
3.05	Community Trigger – number of case reviews initiated (meeting the threshold)	2	1	0	2	0 (Total 3)
3.06	Increase in the use of Restorative Justice in ASB - Neighbour Mediation from Restorative Solutions	15	3	2	1	1 (Total 7)
3.07	A reduction in risk according to the council team Victim Vulnerability Assessment (VVA) Matrix scoring when cases are closed	New PI from 2022/23	25.5 reduced to 20 (2 cases)	No cases closed	17.4 reduced to 9.1 (25 cases)	13.8 reduced to 5.7 (13 cases) (Avg: 18.9 reduced to 11.6)

OFFICIAL

Priority 3 Work with communities to deal with antisocial behaviour (ASB) and crime hotspots, including ASB linked to substance misuse

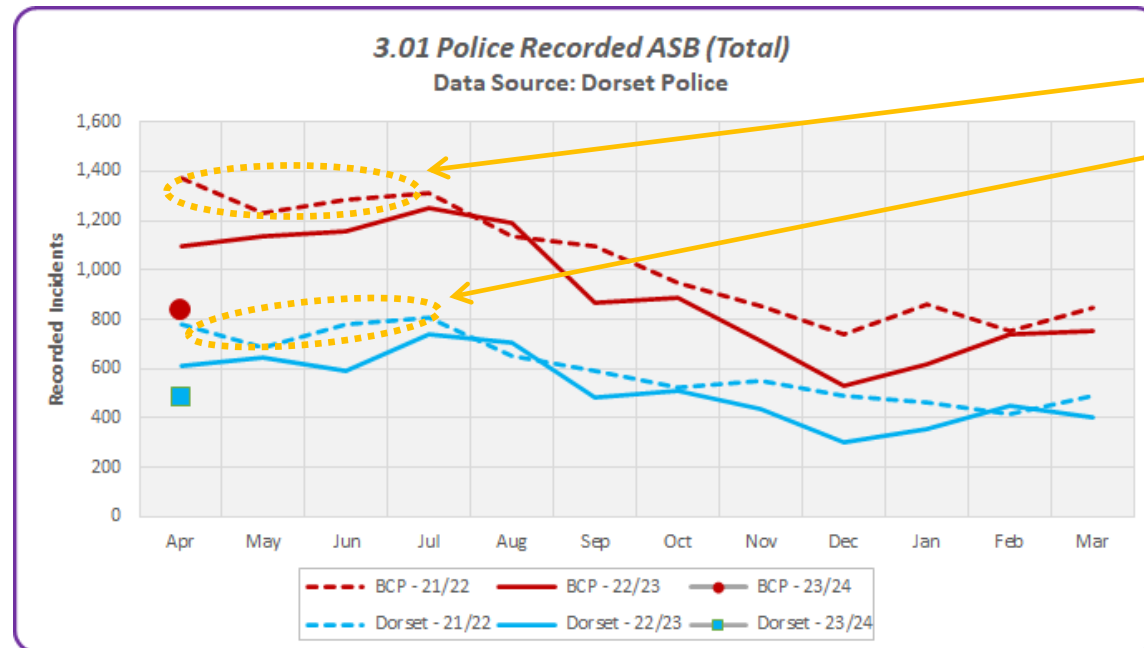
			2022 / 2023 Year			
INDICATOR		2021/2022 Baseline	1st Qtr	2 nd Qtr	3 rd Qtr	4 th Qtr
3.08	Number of ASB Victims supported by Victim Support	235	33	84	TBA	TBA
3.10	Number of Civil Injunctions issued (ASB)	13	2	3	5	1 (Total 11)
3.12	Number of Community Protection Warning letters (CPW's) issued	122	18	17	12	31 (Total 78)
3.13	Number of Community Protection Notices (CPN's) issued	14	3	0	1	7 (Total 11)
3.14	Number of times Closure Powers used	10	3	4	2	0 (Total 9)
3.15	Drug-related deaths	35 (pending ratification)	-	-	-	-
3.16	Alcohol Specific Mortality	57 (14.6 per 100,000)	-	-	-	-
	☞ Figure is calendar year 2020. 2021 figure to be released later in the year.					
3.17	Hospital admission episodes for alcohol-specific conditions (2020/21 data)	3,115 (807 per 100,000) 2020/21	-	-	-	2,358 2021/22
3.18	Emergency hospital admissions for intentional self-harm (2020/21 data)	1,225 (319.9 per 100,000) 2020/21	-	-	-	1,035 2021/22

OFFICIAL

Priority 3 Work with communities to deal with antisocial behaviour (ASB) and crime hotspots, including ASB linked to substance misuse

			2022 / 2023 Year			
INDICATOR		2021/2022 Baseline	1st Qtr	2 nd Qtr	3 rd Qtr	4 th Qtr
3.19	Hospital admissions due to substance misuse (15-24 years)	210 (146.9 per 100,000)	-	-	-	-
3.20	Numbers in drug and alcohol treatment	2,515	-	-	-	-

BY MONTH, AND COMPARISONS WITH DORSET COUNTY:



Measurable COVID-related increase in recorded ASB (at peak about 32% of total ASB was directly related to coronavirus and quarantine breaches) fell below 1% in July 2021.